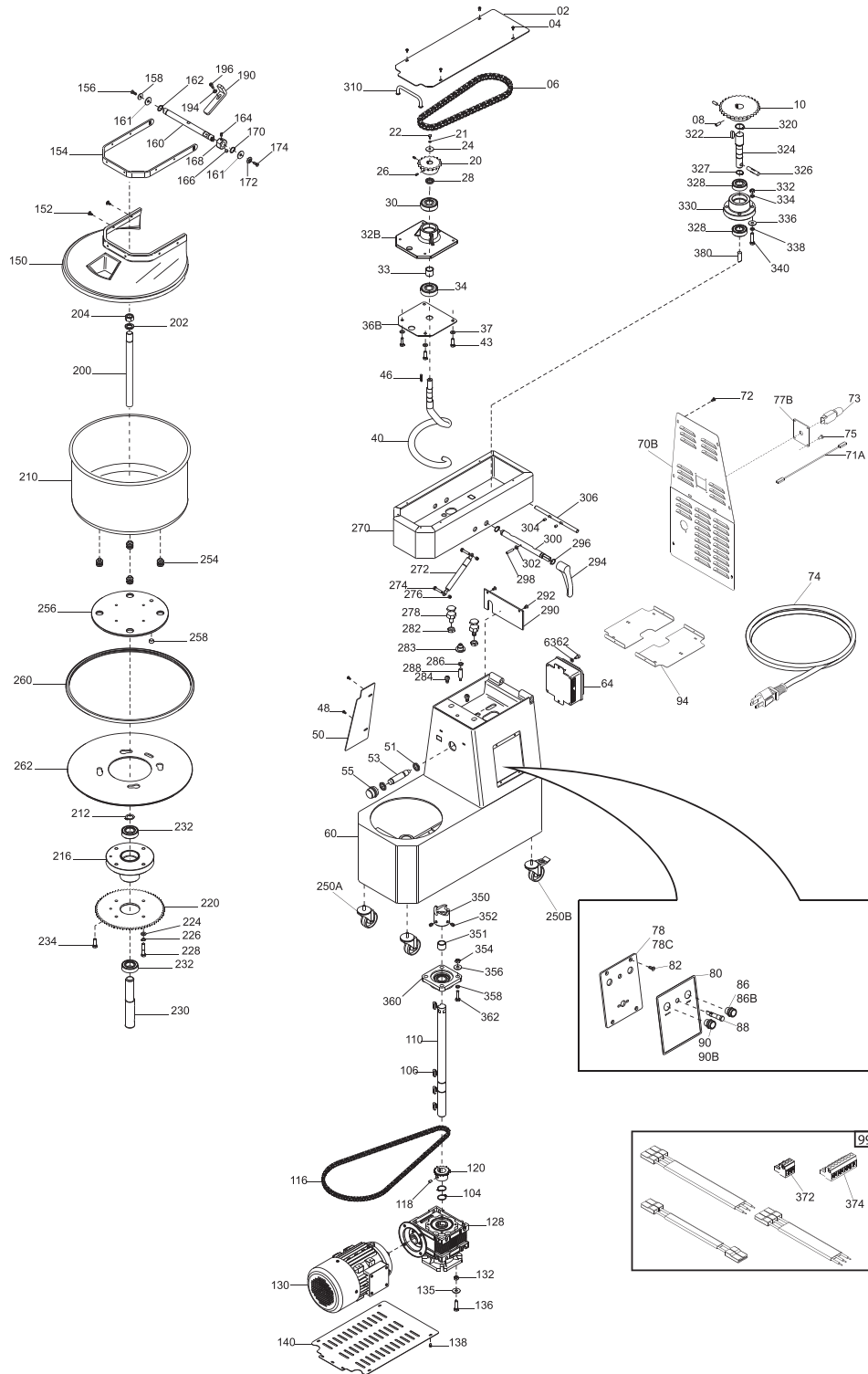


# Parts Breakdown

Model MX-IT-0020-R 47087





# Parts Breakdown

## Model MX-IT-0020-R 47087

Item No.	Description	Position	Item No.	Description	Position	Item No.	Description	Position
AH080	Upper Casing ETL HRC TA 20 VRN for 47087	02	69217	Screw Poeliers M4x8 for 47087	48	AG950	White Push Button N.O. for 47087	90
69217	Screw Poeliers M4x8 for 47087	04	AH073	Internal Wiring 110/60 UL HRC TA for 47087	49	AG948	Stainless Steel On Button with Light Y12 Resin UL for 47087	90B
AG956	Chain Spir. 1/2"x5/16" HRC 20 for 47087	06	AG985	Tank Protection ETL HRC 20 VERN. for 47087	50	AH084	Internal Panel ETL HRC 20 TA for 47087	94
AH031	Screw DIN 916 M6x20 NE for 47087	08	AH076	Proximity Sensor HRC TA for 47087	53+51	62652	Nut ES. DIN 439 M10 Basso for 47087	96
AG959	Pinion Z30 1/2"x5/16" for 47087	10	AH096	Proximity Support for 47087	55	AH027	Nut ES. DIN 934 M10 for 47087	97
AH027	Nut ES. DIN 934 M10 for 47087	12	AH079	Welded Frame ETL HRC TA 20 VERN. for 47087	60	62645	Flat Washer DIN 125 D 10 for 47087	98
62645	Washer DIN 125 D 10 for 47087	15	62660	Washer Large DIN 9021 D6x18 for 47087	61	AH073	Internal Wiring 110/60 UL HRC TA for 47087	99
AH016	Washer F.Larga DIN 9021 D 10x30 for 47087	16	AH019	Screw TCEI DIN 912 M6x10 for 47087	62	AH007	Retaining Rings DIN 471 D 25E for 47087	104
AH025	Screw TE DIN 933 M10x35 T.F. for 47087	18	AG995	Electrical Box HRC UL 110/60 for 47087	64	AH009	Feathers DIN 6885 / A8x7x25 for 47087	106
AG960	Pignon Z17 1/2"x5/16" D16 for 47087	20	AH081	Rear Carter Y16 ETL HRC TA 20 VRN for 47087	70B	AH078	HRC Transmission Shaft TS 20 for 47087	110
AH003	Grower Washer UNI 1751 D.6 for 47087	21	AG952	Power Cable UL Thermal Protection for 47087	71A	AG957	Tank Chain 3/8"x7/32" HRC 20 for 47087	116
AH021	Screw TE DIN 933 M6x22 T.F. for 47087	22	69217	Screw Poeliers M4x8 for 47087	72	AH030	Grub Screw DIN 916 M6x8 NE for 47087	118
AH002	Grower Washer UNI 1751 D 5 for 47087	23	AG967	Thermal Protection T11 211 15A UL HRC 20 for 47087	73	AG961	Pignone Z16 3/8"x7/32" D25 CHI.HRC 2 for 47087	120
AH015	Washer F.Larga DIN 9021 D6x24 for 47087	24	AG966	Power Cable 110/60 ETL HRC 20 PA244S for 47087	74	AG964	RID.NMRV 050 B14 1/30 FA80 F1 HRC20 for 47087	128
AH029	Screw DIN 916 M4x10 NE for 47087	26	AH010	Screw Autof.TC+DIN 7981 D3x8 for 47087	75	AG963	Motor MC 80 0,75KW B14 4P UL 115/60 for 47087	130
AG974	Spiral Support Distance HRC 20 for 47087	28	AG991	Supp. Plate Prot. Term. MN HRC for 47087	77B	AH027	Nut ES. DIN 934 M10 for 47087	132
AG946	Ball Bearing 6303 2-RD HRC 20 for 47087	30	AH060	Plate, Controls Panel for 47087	78	62645	Flat Washer DIN 125 D10 for 47087	135
AG954	Spiral Cast Iron Supp Y12 HRC 20 LAV. for 47087	32B	AG987	CE HRC 20 Stainless Steel Control Plate for 47087	78C	AH024	Screw TE DIN 933 M10x30 T.F. for 47087	136
AG976	Spacer HRC 20 for 47087	33	AH011	Screw TC+ DIN 7985 M4x8 for 47087	79	69217	Screw Poeliers M4x8 for 47087	138
AG946	Ball Bearing 6303 2-RD HRC 20 for 47087	34	AG971	Face Plate, Controls Panel for 47087	80	AG988	Lower Cover HRC 20 for 47087	140
AG973	Spiral Support Plate Y12 HRC 20 for 47087	36B	AH012	Screw TSPEI DIN 7991 M5x8 for 47087	82	AG994	ETL HRC 20 Thermoformed Protection for 47087	150
62644	Flat Washer DIN 125 D 8 for 47087	37	AH014	Washer F.Larga DIN 9021 D4x12 for 47087	84	69218	Screw Poeliers M5x8 for 47087	152
AG972	Spiral Y17 HRC 20 for 47087	40	AG949	Black Push Button N.O. for 47087	86	AG992	Cover Profile Prot. HRC 20 for 47087	154
AH022	Screw TE DIN 933 M8x25 T.F. for 47087	43	AG947	Stainless Steel Off Button Resin-Coated Y12 UL for 47087	86B	AH013	Flathead CSK Screw DIN 7991 M5x14 for 47087	156
AH008	Feathers DIN 6885 / A5x5x25 for 47087	46	AG951	Unified Light UL 24 V for 47087	88	AG980	Shaft, Tank Protection HRC 20 for 47087	160

# Parts Breakdown

## Model MX-IT-0020-R 47087

Item No.	Description	Position	Item No.	Description	Position	Item No.	Description	Position
AG996	Plastic Washer 16x25x1 HRC for 47087	161	AG945	Bearing 6205 2RS ORS for 47087	232	AH101	Retaining Rings DIN 471 D 16E for 47087	296
AH006	Stop Rings DIN 471 D 15E for 47087	162	AH022	Screw TE DIN 933 M8x25 T.F. for 47087	234	AH104	Grub Screw DIN 913 M4x35 CE for 47087	298
AH030	Grub Screw DIN 916 M6x8 NE for 47087	164	AG998	Wheel HRC ETL CMT1-3PBB for 47087	250A	AH090	HRC Release Shaft TA 20 for 47087	300
18960	Magnet for SO Anodized/GF/FR for 47087	166	AG999	HRC ETL Wheel C / Brake CMT1-3PPB for 47087	250B	AH026	Hex.Nut DIN 934 M4 for 47087	302
AG997	Cam HRC TA for 47087	168	AH087	Bowl Insert, HRC TA for 47087	254	AH030	Grub Screw DIN 916 M6x8 NE for 47087	304
AG977	Washer HRC for 47087	172	AH085	Fixed Disc HRC TA for 47087	256	AH091	Head Hinge Shaft HRC TA 20 for 47087	306
AH026	Hex.Nut DIN 934 M4 for 47087	177	AH086	Pin for 47087	258	AH075	Handle HRC TA for 47087	310
AH000	Washer Flat DIN 125 D.4 for 47087	179	AH098	Rubber Mobile Disc HRC TA 20 for 47087	260	AH007	Retaining Rings DIN 471 D 25E for 47087	320
69215	Nut DIN 934 M3 for 47087	182	AH088	Disco Mobile HRC TA 20 for 47087	262	AC008	Screw DIN 916 M8x10 NE for 47087	321
AH017	Screw TCEI DIN 912 M4x12 for 47087	184	AH082	Welded Head ETL HRC TA 20 VERN. for 47087	270	AH009	Feathers DIN 6885 / A8x7x25 for 47087	322
AG989	Corner Plate Hercules for 47087	190	AH017	Screw TCEI DIN 912 M4x12 for 47087	271	AH089	Transmission Shaft for 47087	324
AH000	Washer Flat DIN 125 D.4 for 47087	194	AH072	Gas Spring 094323 HRC TA 20 for 47087	272	AH103	Pin Inox DIN 7 D10x50 for 47087	326
AH017	Screw TCEI DIN 912 M4x12 for 47087	196	AH014	Washer F.Larga DIN 9021 D 4x12 for 47087	273	AH102	C-Clip, Retaining DIN 471 D.20 EXT for 47087	327
AG979	Rod Breaker HRC 20 for 47087	200	AH105	Screw TE DIN 933 M6x30 T.F. for 47087	274	AH034	Ball Bearing 6204 2RS NTN for 47087	328
AH005	Grower Washer UNI 1751 D 18 for 47087	201	62643	Flat Washer DIN 125 D 6 for 47087	275	AH071	Head Holder for 47087	330
AH033	Flat Washer DIN 125 D 18 Zinc for 47087	202	AH106	Hex.Nut DIN 934 M6 for 47087	276	62644	Flat Washer DIN 125 D 8 for 47087	334
AH028	Nut ES. DIN 934 M18 for 47087	204	AH093	Hexagonal Screw for 47087	278	AH004	Grower Washer UNI 1751 D 8 for 47087	336
AG975	Processing Tank 360x210 HRC 20 for 47087	210	AH099	Washer DIN 125 D12 for 47087	280	62645	Flat Washer DIN 125 D 10 for 47087	338
AH007	Retaining Rings DIN 471 D 25E for 47087	212	AH109	Self-Lock Nut ES DIN982 M12 Low for 47087	282	AH108	Screw TBSQ DIN 603 M8x35 Zinc for 47087	340
AG955	Bowl Holder HRC for 47087	216	AH097	Supp. Cover Sensor M10 HRC TA for 47087	283	AH092	Transmission Joint HRC TA for 47087	350
AG962	Crown Z70 3/8"x7/32" LAV.CHI.HRC 20 for 47087	220	AH094	Pin HRC TA for 47087	284	AH074	Distance Transm. Joint HRC 20-30 TA for 47087	351
AH004	Grower Washer UNI 1751 D 8 for 47087	226	AH077	Magnetic Sensor Head UL HRC TA for 47087	288	AC008	Screw DIN 916 M8x10 NE for 47087	352
AH023	Screw TE DIN 933 M8x35 T.F. for 47087	228	AH083	Protection Micro ETL HRC TA 20 VRN for 47087	290	AH030	Grub Screw DIN 916 M6x8 NE for 47087	353
AG981	Shaft, Bowl Support HRC for 47087	230	AH012	Screw TSPEI DIN 7991 M5x8 for 47087	292	AH027	Nut ES. DIN 934 M10 for 47087	354
AH032	Screw without Head DIN 916 M8x16 NE for 47087	231	AH095	Release Lever, HRC TA for 47087	294	AH009	Feathers DIN 6885 / A8x7x25 for 47087	355

# Parts Breakdown

---

## Model MX-IT-0020-R 47087

Item No.	Description	Position	Item No.	Description	Position	Item No.	Description	Position
62644	Flat Washer DIN 125 D 8 for 47087	356	62645	Flat Washer DIN 125 D 10 for 47087	358	AG969	3-Pole HRC Connector for 47087	372
62645	Flat Washer DIN 125 D 10 for 47087	356	AG958	Flange Support HRC for 47087	360	AG970	8 Poles HRC Connector for 47087	374
AH004	Grower Washer UNI 1751 D 8 for 47087	357	AH025	Screw TE DIN 933 M10x35 T.F. for 47087	362	AH107	Screw without Head DIN 916 M8x12 NE for 47087	380
AH100	Grower Washer UNI 1751 D 10 for 47087	357	AH108	Screw TBSQ DIN 603 M8x35 Zinc for 47087	362			